

NORDBAK ACID GROUT - UNLOCKING UNMATCHED STRENGTH BY ENHANCING HEAVY MACHINERY FOUNDATIONS

Part Number: 9505-9550A (20KG)

Description: **NORDBAK® Acid Grout** is a robust 100% solids co-polymer grout known for its exceptional strength-to-cost ratio. Its composition includes graded aggregate filler, which effectively increases the volume of the mixed grout without compromising its strength. This unique feature makes it an ideal choice for applications in dilute acid spill areas where durability and efficiency are paramount.

Features: **NORDBAK® Acid Grout** is engineered to handle substantial pour volumes, starting from 25mm and upwards. Its semi-fluid consistency allows for excellent flow, making it well-suited for applications under rails and sole plates, while also exhibiting self-leveling properties. This grout reliably maintains critical alignments, even under high torque loading and vibration conditions. It forms secure bonds with both steel and concrete surfaces and remains unaffected by operating temperatures of up to 100°C. With a quick setting time, machinery becomes operational within 24 hours at 21°C after application.

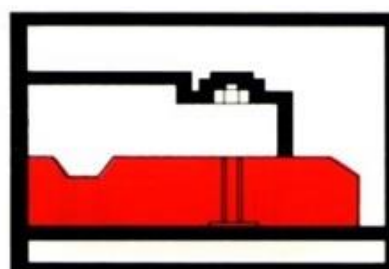
Intended Use: Epoxy grouts indeed provide exceptional strength and durability, making them an ideal choice for reinforcing or repairing heavy machinery foundations.

Limitation: Please note that the customer is responsible for selecting the appropriate product, and Nordbak accepts no responsibility in this regard.

Product Performance: **NORDBAK® Acid Grout** boasts self-leveling properties, capable of enduring high torque loading and vibration. Its exceptional performance extends to dilute acid spill areas, making it an ideal solution for demanding industrial environments.

Advantages: One of the key advantages of **NORDBAK® Acid Grout** is its ability to fill voids and gaps effectively, ensuring proper load transfer and support for machinery. This helps in preventing equipment movement and misalignment, which can lead to premature wear and damage.

All components are conveniently packed in a single container, which also doubles as a mixing vessel. Mixing and application become a hassle-free two-person task, eliminating the need for expensive mixers or vibrators. Additionally, time-consuming cleanup is virtually eliminated, streamlining the entire process.



Technical Data:

Shelf-life	12 months
Working Time at 21°C	30 minutes
Gel time at 24°C	60 Minutes
Time to reach Operating Strength at 24°C	24 hours
Compressive Strength (ASTM D695)	131 MPa
Tensile Strength (ASTM D638)	17MPa
Impact (Double Hammer)	52
Application	Reinforcing or repairing heavy machinery foundations, under rails and sole plates
Product Features	<ul style="list-style-type: none"> • Strength and durability • Self-leveling properties • Can endure high torque loading and vibration • Fills voids and gaps

Curing Schedule:

Temperature	12,8°C	21,1°C	26,7°C	32,2°C
Working time after mixing (min)	45	30	20	15
Cure time (hours)	36	24	20	18

Product Appearance:

Components	Resin, hardener and aggregate
Appearance (Resin)	Clear
Appearance (Hardener)	Clear
Colour	Please note that there may be a slight potential variation in colour between batches.
Kit Size	20kg

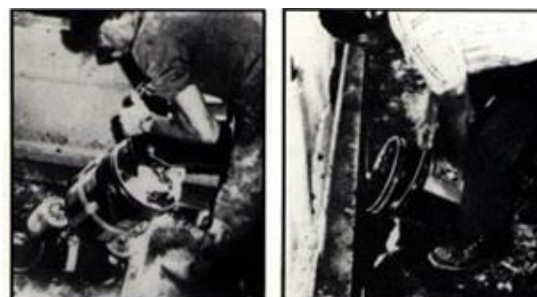
Preparing Foundation:

Follow manufacturer's print. For the best results provide a pouring area of 50mm or more between foundation and rail or sole plate. It may be advisable to chisel out pockets if access is restricted. The larger the access area, the greater the head pressure, and the better the grout will flow.

Pour grout as soon as possible after mixing. If the cavity is well vented, grout may be poured from one side provided all air is forced out from under rails or sole plates. A trough fashioned of tin or cardboard may be helpful in directing flow into restricted areas.

Although the grout has excellent flow characteristics, you may wish to help it along with push rods or rebar.

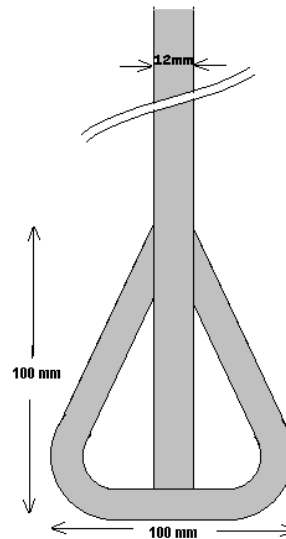
Mixing:



All components — resin, hardener, and aggregate — are conveniently packed in a sealed 20kg pail for effortless handling and mixing. Due to pre-measured ingredients, mixing in batches smaller than the kit size is not advised. Typically, multiple kits are mixed simultaneously for optimal efficiency.

Equipment Needed:

The only equipment needed is a 13mm electric drill and a triangular mixing paddle 100mm on each side, constructed of 12mm rebar or steel rod, with a finished overall length of 350mm to 400mm, to reach the bottom of the pail without immersing the drill chuck.



Mixing Instruction:

- After opening the container, remove both plastic buckets.
- Mix aggregate by hand or with trowel until stone and powder are mixed.
- Pour contents of large plastic bucket over aggregate and using a slow speed drill (400rpm) mix until a paste mixture is achieved.
- Add contents of small plastic bucket and mix thoroughly to a uniform consistency.
- Pour contents directly into areas where Grout is required with a minimum of delay – maximum 10 minutes.

Product Application:

- Acid Spillage Areas
- Large pumps
- Bridge seals
- Rail approaches
- Structural columns

Application Temperature:

The application temperature can affect the working life of **NORDBAK® Acid Grout**, which is the duration it stays relatively fluid after mixing the components. The lower the temperature, the longer the working life. The grout is formulated for fast and easy pouring at temperatures between 13°C and 21°C and has a working life of approximately 30 minutes. When the temperature is above 35°C, immerse unopened containers in cold water for a few hours before mixing. In cold weather, store grout

kits in a warm area to warm to at least 15°C before mixing. If possible, after pouring maintain temperature of at least 13°C for 24 hours or longer.

Technical Tips:

Working and cure time is dependent on temperature and mass:

- The higher the temperature, the faster the cure.
- The larger the mass of material the faster the cure.

To speed up the cure time at low temperatures:

- In cold weather, store the kits in a warm area and heat the resin to 15-25°C before mixing (avoid overheating the resin before adding the hardener).

Protection:

Do not mix resin and hardener until ready to commence.

- All work is to be done in a well-ventilated area.
- Ensure the use of adequate PPE to be worn upon mixing and application.
- Refer to Material Safety Data Sheet.

Storage:

Store **NORDBAK® Acid Grout** indoors on pallets at temperatures between 10°C and 35°C. Keep container tightly closed and away from acids and oxidizers. If product is removed from container do not return it to the original container to avoid contamination.

Disclaimer:

The information provided in this data sheet including the recommendations for use and application of this product are based on our knowledge and practical experience and laboratory tests of the product as at the date hereof. This data sheet shall be used as a guide to the user's application.

This product has been designed for specific applications based on normal working and operating conditions, and although it may be used in different applications and working conditions such instances are beyond our control. Nordbak shall not be liable for the suitability/merchantability of our product in your application unless we have specifically advised so in writing. Accordingly, we advise that you conduct your own investigations to confirm the suitability of our product, as it ultimately remains the user's responsibility to protect property and persons against hazards emanating from the handling and use thereof. Accordingly, any civil liability because of damages, injury, or death, in respect of the information in this data sheet, or any other written or oral recommendation(s) regarding the suitability of this product, are hereby excluded. Nordbak shall not be liable under any circumstances for any consequential or incidental damages of any kind, including but not limited to loss of profits.